



Advanced Co-Teaching: Through an EQUITY Lens

December 17, 2019 at Metro ECSU
8:30am-3:30pm (8:00am check in)



Who should attend?

Co-teacher teams, administrators, specialists, instructional coaches, para educators, any combination of teacher teams.

Co-teachers, you're not on an island.... If you've found your co-teaching partner and are looking for more to take you further, this is the session for you! Participants will dive deeper into the models of co-teaching, critical setup and maintenance of their co-teaching partnerships, and will analyze the makeup of the students in their co-taught class through an EQUITY LENS. Likewise, this session explores how equity mindset impacts instructional strategies and the conceptual concept of collaboration!

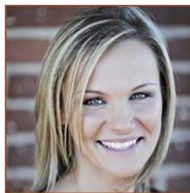
Participants will:

- Build on your co-teaching practices to extend your instructional effectiveness with an equity focus.
- Design lessons to maximize teacher-student time and improve time-on-task using culturally responsive approaches.
- Develop advanced methods for small group instruction and flexible grouping.
- Implement powerful scaffolding and differentiating instruction strategies to better meet ALL student needs.

"After co-teaching for several years with the same co-teacher, this session helped us fine tune our partnership. It's amazing what we found out about how to differentiate for our co-taught students!"

Workshop participant.

Presenter Martina Wagner, Ed.D:



Dr. Martina Wagner has served English Language learners for over twenty years in grades pre-K through adult education. Her expertise includes best practice and programming for ELs, Sheltered Instruction, Co-teaching, Special Education Identification of ELs, WIDA standards, and English Language Learning assessments and data. Martina's background in co-teaching spans from classroom to district implementation, professional developer, instructional coach, as well as strategic district action planning and implementation. Martina has done extensive research throughout the United States on co-teaching and currently serves public, private, and charter schools as a professional development consultant.

Registration Fee & Contact Information:

\$115 [Metro ECSU Member](#);

\$225 Non-member (lunch included)

Register online:

<http://metroecsus.myquickreg.com/register/event>

Registration Deadline: December 17, 2019

Cancellation Deadline: December 13, 2019

Registration Contact:

Angela Skrade, 612.638.1528

angela.skrade@metroecsus.org

Location:

Metro ECSU
(Anderson Center, Bethel University),
2 Pine Tree Dr, Arden Hills, MN 55112
612.638.1500 www.metroecsus.org

In compliance with the Americans with Disabilities Act, when special accommodations are needed, contact Angela Skrade (612-638-1528; angela.skrade@metroecsus.org) at least two (2) weeks before the event date. Special accommodation cancellation notices are accepted no later than two (2) business days before the event date. Cancellations after the deadline will be billed for special accommodations fees.